

Sharing Scholarship, Study, and Life Experience
at
Saitama University, Japan



THET MON SOE



A Bit About Me



PAST EDUCATION

- **BBM (NMDC), MPA (YUEco), Dip Eng(YUFL), DEcon (Saitama University)**



Employment Background

- **Lecturer, YUEco (2015-ongoing)**

Table of contents



My Story

Scholarship Program &
University



MEXT Quick Overview

Scholarship
Features & Schemes



Saitama University

Course, Student
Life, Financial Aid,
Accommodation

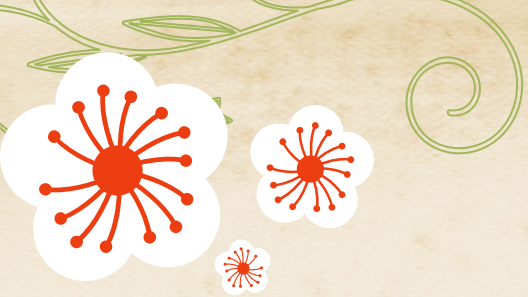


Learning Experiences



Conclusion





01 My Story



Scholarship

MEXT /
Monbukagakusho
Scholarship
(Monbusho) (2019-
2021)



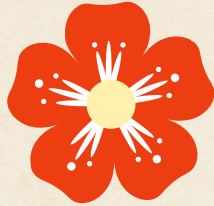
University

Saitama University,
Japan



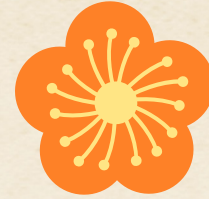
MEXT Scholarship Features	Done
Round Trip	✓
Airfare	✓
Free Admission & Tuition Fees	✓
Monthly Allowance	✓
TYPES OF SCHOLARSHIP	
RESEARCH/GRADUATE Students, Teacher Training Students, Undergrad Univ Students, Japanese Studies Students, College of Technology Students, Special Training College Students, Young Leader's Program (YLP) Students	

HOW to become a MEXT scholarship student?



Embassy Recommendation

- Initial Screening by relevant embassy
- Second Screening by MEXT
- Getting the scholarship first, Choosing Univ later



University Recommendation

- Screening of Each Graduate School
- Through Partnership Agreement (MoU)
- Getting the Univ first, the scholarship later (only for newcomers to Japan)

An orange tablet graphic with a white screen. The screen contains the text 'Docuement Preparation (My Experience)'.

Docuement
Preparation
(My Experience)

- ✓ Application Form
- ✓ Degree Certificates
- ✓ Academic Transcripts
- ✓ English Proficiency Certificate (IELTS)
- ✓ Research Proposal
- ✓ Recommendation Letters

03

Saitama University



Academic Calendar

Spring (Apr-Sept) &
Fall (Sept-May)




Academic Programs

Undergraduate,
Graduate, Non-degree,
& Summer Programs



Graduate Programs

Graduate School of Humanities & Social Sciences
Graduate School Science & Engineering
Graduate School of Education



Saitama University's Facilities



University Library

University Hall



OASIS

Gymnasiums



Cafeteria & Co-op Store



Health Service Center

Saitama University's Accommodation for Inter' Students

Living in International House

- I-House 1st, 2nd,& 3rd Building
 - Single, Couple, Family
-
- I-House Office, Meeting Lounges
 - Lobby, Laundry Room, Room for RA

Living in International House

- Higher Cost than I-House
- Need for Joint Guarantor

My PhD Journey



Type of Student

- Research & Phd Student (GSHS)
- Fall Semester



Accommodation

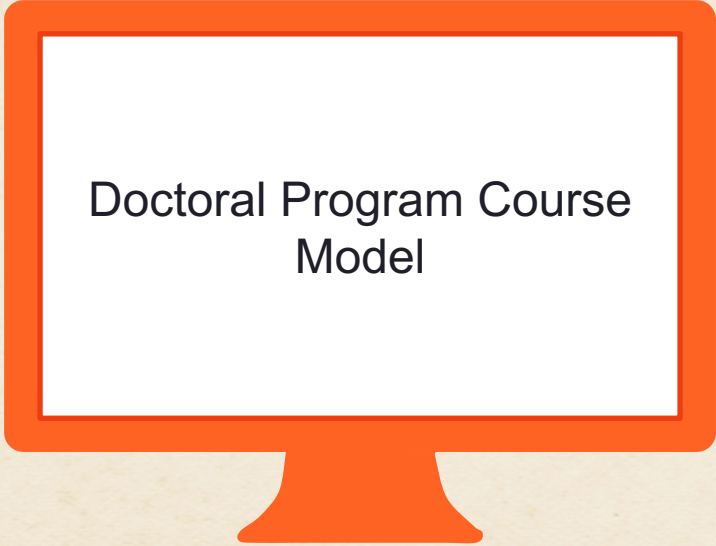

I-House & Private
Apartment



Courses


- Economic Courses
- Intensive Japanese Language Course
- Research Seminars





Doctoral Program Course Model

Completion Requirements

- Class Subjects: 6 credits (3 subjects or more)
 - Project Research: 2 credits
 - Advanced Seminars: 12 credits or more
 - Doctoral dissertation review
 - Final Exam(Oral Exam)
- 

Research Experience

Research Area	Trade and Investment
Research Experience	<ul style="list-style-type: none">• 3 published international journal paper• International Seminars & Conference





04

Learning Experiences




Do's:

- Be **fully** prepared for your study
- Keep in touch with “**Supervisor**”
- **Learn** from others
- Learn **Japanese Language**
- Keep anything in **RECORD**
- Use **ANTI-STRESS KIT**



Don'ts:

- Procrastination
 - Far Away from Society
 - Lost in **Study**
 - **Long-lasting** in struggling period
 - Losing **Priorities**
 - **Financial Mismanagement**
 - Information **GAP**
- 



Thank YOU

Do you have any questions?

thetm185@gmail.com